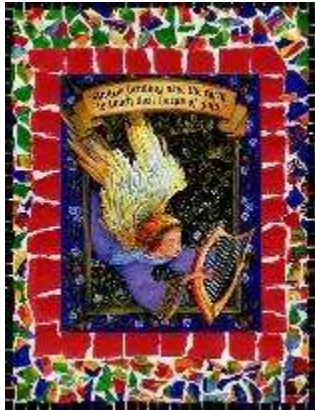


## Festive Christmas Mosaics

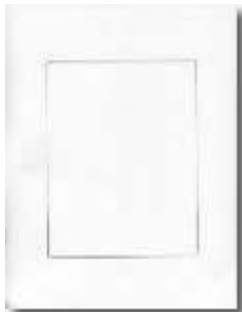


Here's a way to recycle holiday gift wrap and Christmas cards – make torn paper mosaics that can be hung on a wall or laminated and used as placemats at Christmas dinner!

### Supplies:

A sheet of white paper, 8-1/2" x 11"  
A colorful Christmas card  
Dark, solid colored gift wrap (or construction paper)  
Colorful gift wrap with a design  
Black construction paper  
Glue stick  
Scissors  
Pencil

### Directions:



1. Center the card on the white paper and trace around it with the pencil.



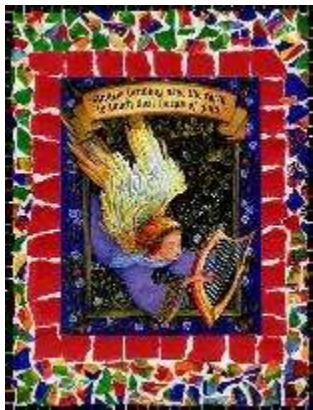
2. Tear squares (3/4" x 3/4") out of the dark, solid gift wrap. Using the glue stick, glue them all around the rectangle you drew. Don't let them overlap each other, but do let them overlap into the center.



3. Glue the card in the center.



4. Tear the colorful gift wrap into small uneven pieces. Glue them all around the outside of the dark border. Leave small spaces in between the pieces to look like "grout".



5. Using the scissors, cut 2 or 3 strips from the black construction paper; make them 1/4" wide. Cut these thin strips into little squares. Carefully glue them all around the outer edge to create a border. Be sure to leave the little "grout" spaces in between them.



Note: If just thinking about this last step has you stressed out, just mount the whole thing onto the piece of black construction paper, as long as it is a little wider than your white paper.

**(close-up)**

