

## Czech Landscape



This simple design is a great launch into hard pastels. Learn how your stroke can add movement to your drawing while rendering this flowing landscape.

Ages 10 and up.

*Student artwork shown is courtesy of Elizabeth Davenport and Noah Bauch. Thanks, Liz and Noah!*

### Supplies:

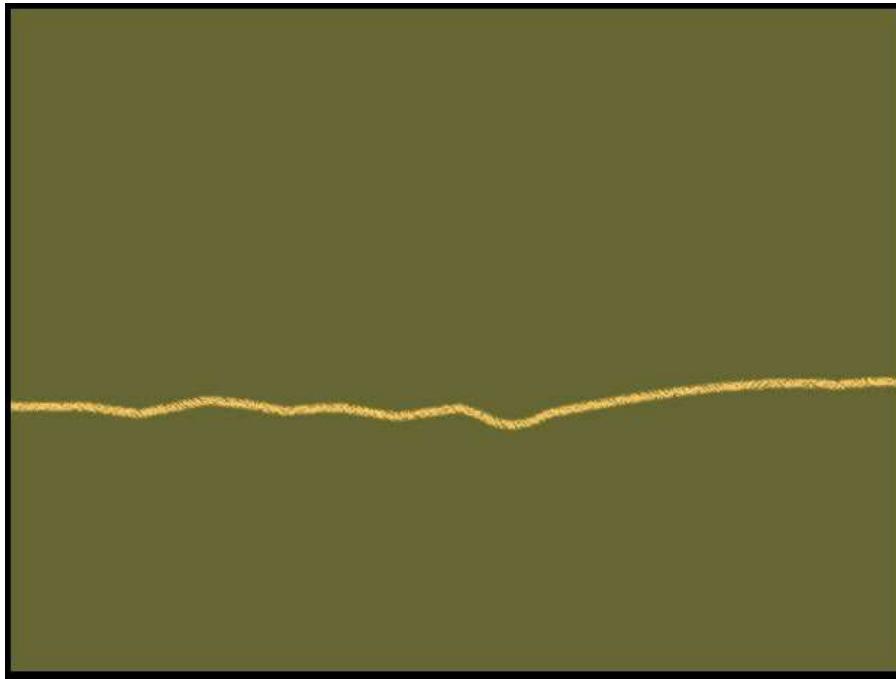
- Colored Pastel Paper (dark)
- Hard Pastels, 24 color set
- Charcoal Pencil (dark)
- Kneaded Eraser
- Blending stumps
- Sandpaper Block
- Photo Reference (at bottom of this page)

**These are the same supplies that are needed for the online course, *Exploring the World with Pastels*. For the best prices, buy these at [Dick Blick online](#).**

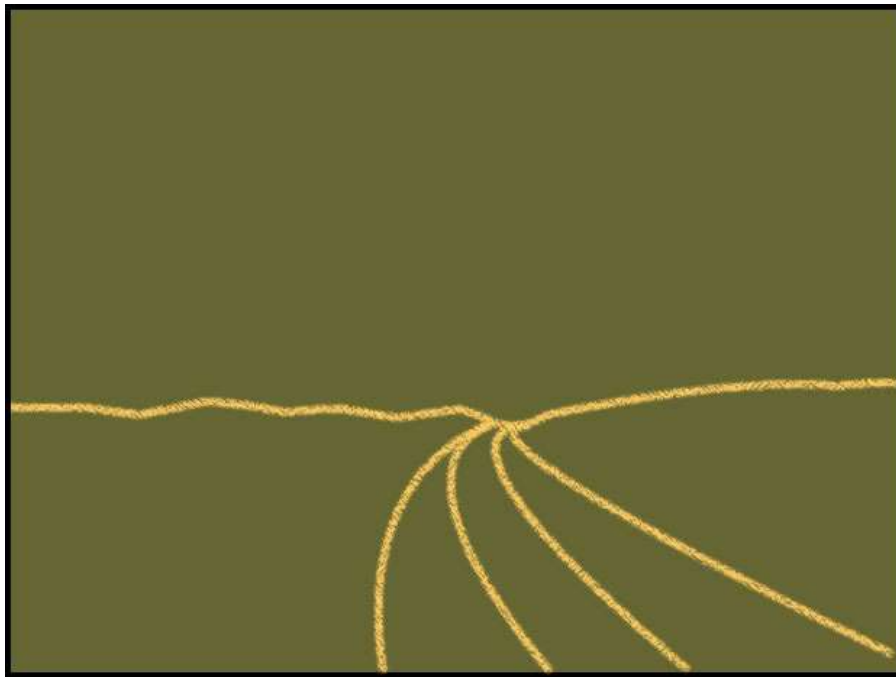
Before beginning, let's look at the work of two different students, Elizabeth (age 16) and Noah (age 11). You can see how the direction of their strokes greatly affects the final product. Having some areas blended and other left rough also creates a lovely texture in these drawings:



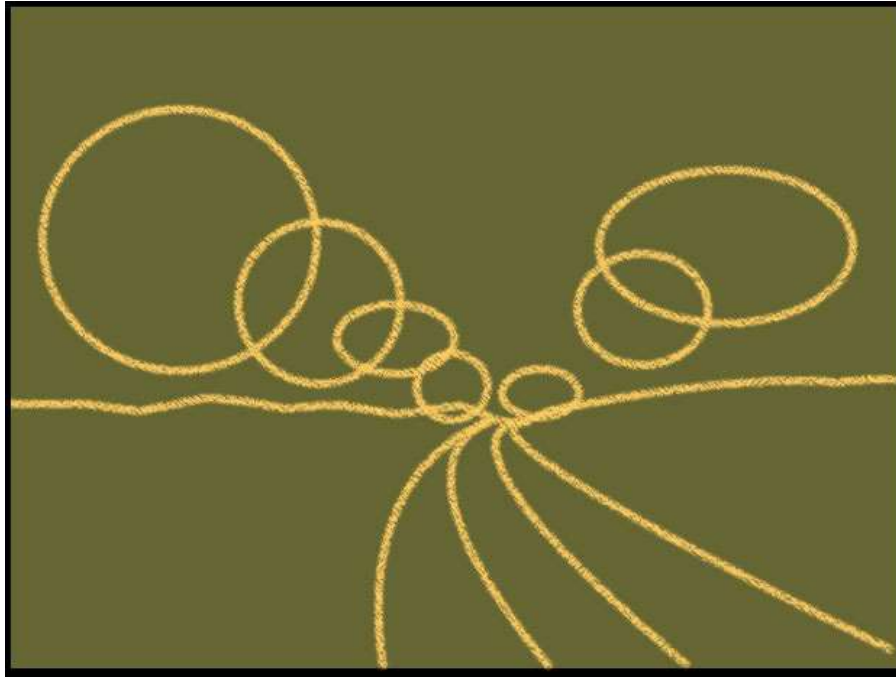
*Instructions:*



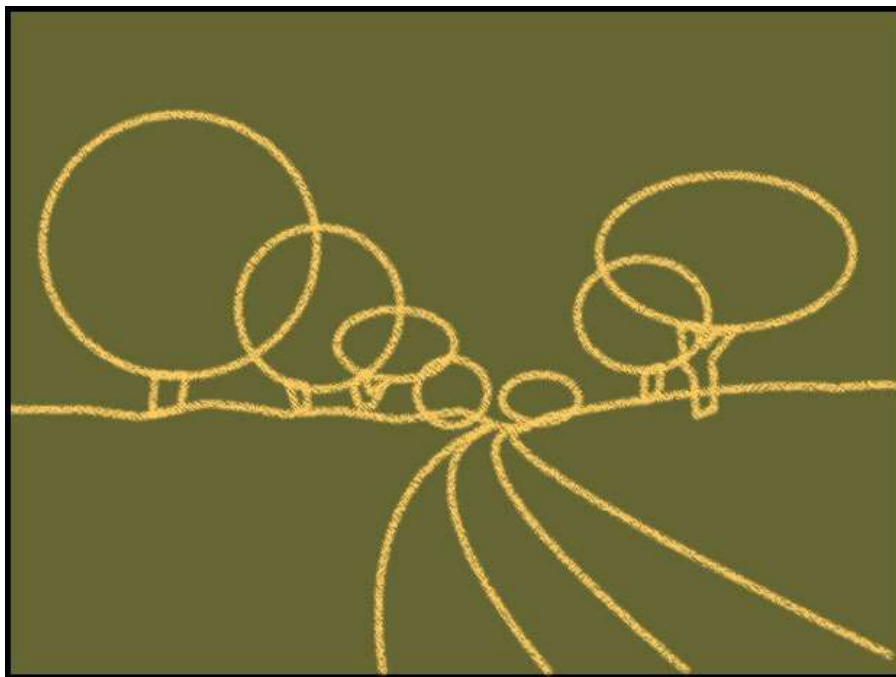
1. Using a tan colored pastel, sketch in the horizon line. Be sure to create a "dip" in the line at the top of the path.



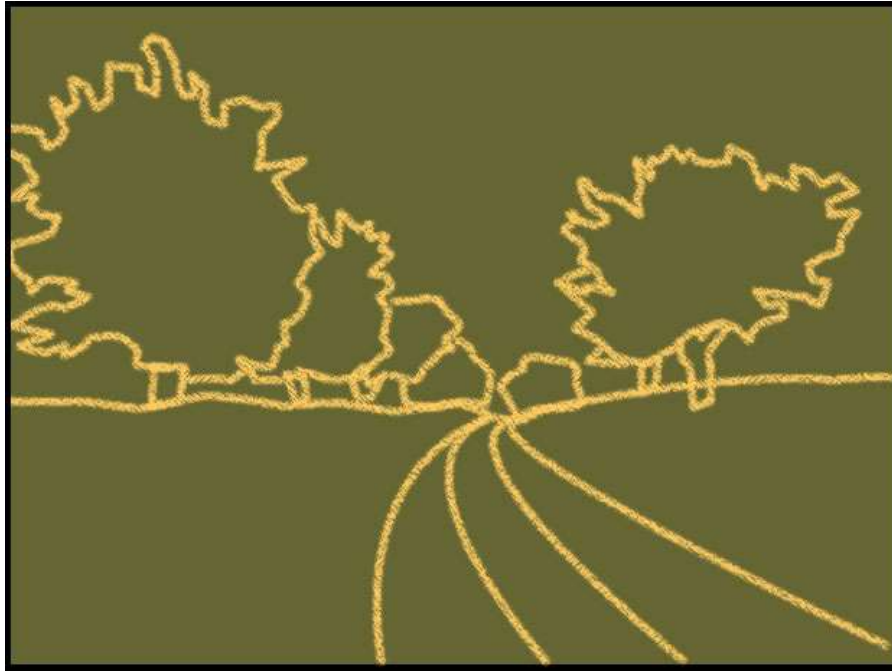
2. Now sketch in the four lines that represent the tractor path.



3. Add circles and ovals for each of the tree tops (7 in all). Just overlap them as you draw.



4. Add all of the visible tree trunk shapes.



5. Now correct the outline of each of the tree tops and erase the circles. Be sure to look carefully at the photo reference and be aware that they overlap each other.



6. Using the basic colors you see here, lay down a light base layer of pastel in the large shapes you have drawn. Blend these well with a blending stump or paper towel wrapped around your

finger. Do not add a lot of color - it's just to lay a base.



6. Begin rendering with the sky. Fill it in with at least two different blue pastels and white for the clouds. Blend these colors with the blending stump if desired.

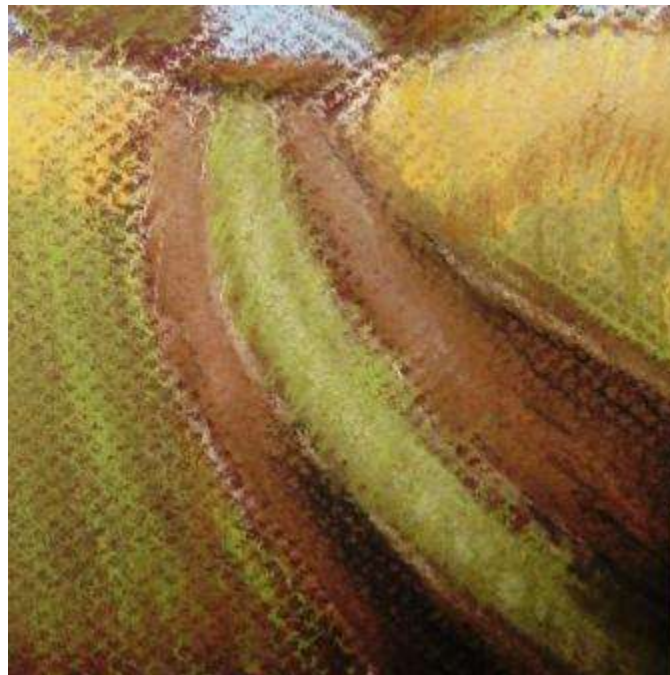


7. Using lots of diagonal strokes and several greens and

browns, fill in the tree tops. Notice the direction of the strokes that this student used. The left side of each tree top is in shadow, so use your dark greens and browns there. Use lighter greens on the right sides. Do not blend. Fill in the trunks with dark brown.



8. Fill in the grassy area with lots of upward strokes using a variety of colors in the green, brown and tan families. Study your photo reference well to see where these colors go.



9. Use dark and light browns to fill in the path. Blend these with

the blending stump. Cautiously add some black in the bottom right area as shown in the photo reference.

**Photo Reference:**



*Courtesy of [www.morguefile.com](http://www.morguefile.com)*