

Drawing Lesson: Pencil Techniques



In this lesson, I will describe a few pencil techniques that I used to render this lighthouse composition. Also included are the steps to sketching it prior to rendering.

Ages: 11 and up (Intermediate - Advanced)

Supplies:

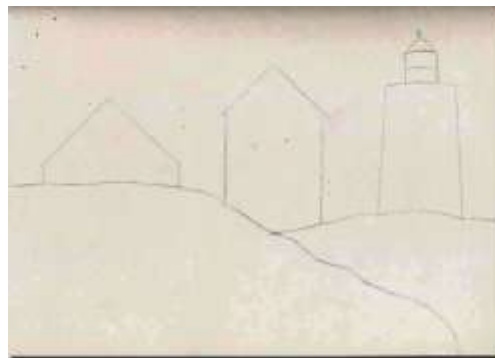
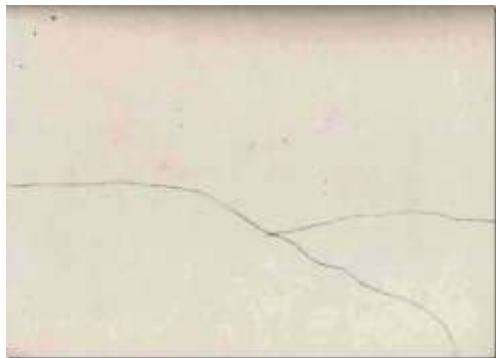
- Tinted (buff) drawing paper
- #2 pencil (HB)
- Ebony drawing pencil (8B)
- Eraser, pink
- Eraser, kneaded
- White colored pencil
- Ruler
- Blending Stump

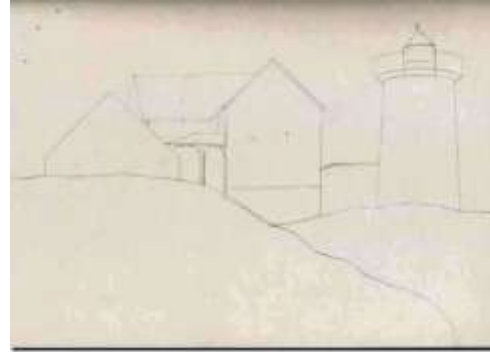
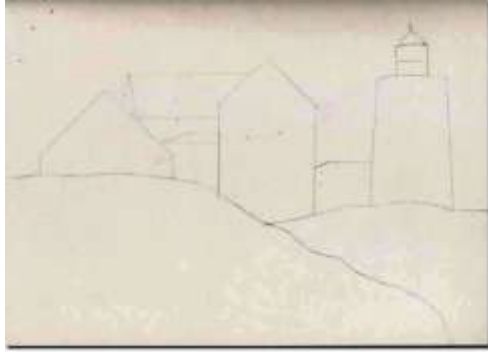
Get the BEST prices for all of these supplies at Dick Blick!



Directions:

1. Using a #2 (HB) drawing pencil, sketch in the composition, using the photo reference below, and these following steps as your guide. Use the ruler for all straight lines!

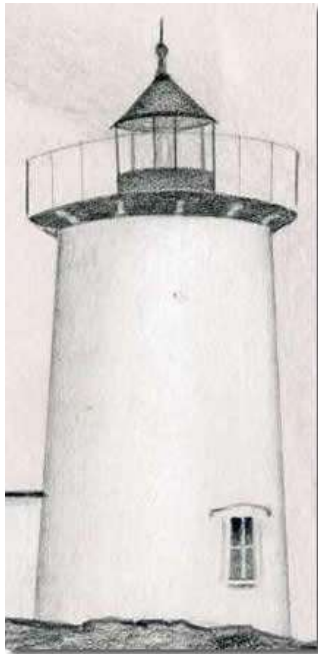




2. The details in this drawing are many, and are not included in the sketches above. Add as many as possible!

4. Starting toning in the composition, using the Ebony pencil for the darkest parts, the #2 pencil for the lighter areas, and the white colored pencil for the whitest areas.

5. Try the following techniques for the different parts of the composition:



For the lighthouse:

Use a combination of all three pencils for this structure.

- Shade in the black areas with the ebony pencil.
- Brighten the center of the lighthouse with the white colored pencil.
- Use the #2 pencil to lightly shade the sides.
- Keep your ruler handy to keep the edges straight!
- Use your blending stump to create a smooth texture.



For the rocks:

Use rough, diagonal strokes with the ebony pencil to create a rugged foreground. Do NOT smudge with the blending stump.

This will provide contrast to the other smoothly rendered components.



For the house:

Use all three pencils to render the house, being careful to keep the texture smooth.

Be sure to use your ruler for EVERY straight line!

Use your blending stump to make the subtle shadows smooth.



For the background:

- First, very lightly draw a large half circle behind the buildings, using a plate as a template.
- Lightly fill in the sky behind the half circle using a "scumbling" effect:

SCUMBLING: This is a technique used to create a smooth, "strokeless" tone. Using a very sharp pencil and a **very light touch** fill in an area by using a circular motion. Start with very small circles and start to spiral around the center, creating a larger, circular area. Your pencil should be just touching the paper with no pressure from your hand.



Photo reference courtesy of NOAA.