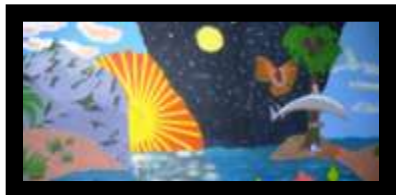


## How to Paint a Wall Mural



Painting a large mural can seem daunting, but there are simple tricks to working big that can make it easy. Mural painting can be very gratifying and even lucrative as a personal business.

Ages 12 and up.

### Supplies:

- Chalk Line Reel (Purchase at Home Depot) \*
- Yard Stick
- Dark Pencil (6B, 8B, or Carpenter's Pencil)
- Fully rendered sketch of mural on paper
- Tracing paper and pencil
- Ruler
- Latex Paints
- Assorted large and small paint brushes
- Painters' Tape
- Drop Cloths
- Several plastic containers for mixing paint colors

### Directions:

#### ***Start with a great drawing:***

- Create a fully rendered, color drawing of the mural you want to paint.
- Figure out your composition and color choices during this step. It's too difficult to see the whole picture when working large.
- Be sure that the drawing is proportionally equivalent to the mural size. (Example: an 8 foot x 10 foot mural should have an 8 inch by 10 inch drawing.)
- Lay tracing paper over the rendering and tape it down. Trace the main outlines of the rendering. Keep it to just a line drawing.

#### ***Prepare the wall:***

- Prepare the wall by painting it with white latex paint if it isn't already white.

#### ***Create a grid:***

- Draw a grid on both the tracing paper and the wall.
- The grid must have the same amount of boxes and be proportionally equivalent. (Example: 1 square inch boxes on the paper = 1 square foot boxes on the wall)
- Use a pencil and a ruler on the tracing paper.

- Use a yard stick to measure and a chalk line reel to place the lines on the wall. (See note at the bottom.)

### ***Transfer the drawing:***

- Using a dark pencil, draw the lines for the mural on the wall, one box at a time, using the tracing paper drawing as your guide.



### ***Paint the mural:***

- Lay down a base coat of the basic colors on the shapes you have drawn without details or shading. Allow to dry.
- Add shadows, highlights, texture, and details with smaller brushes over the under painting.



*This Creation mural was painted by Masterpiece students in 2008.*

### ***\* Using a chalk line reel:***

- This instrument has a reel of string inside it that is coated in blue or red chalk.
- You will need two people to use it.
- One will hold the end of the string and the other will extend it across the wall.
- Then, you both hold it tightly against the wall and snap the string with your fingers. This will create a straight line on the wall.

